



EXTERNAL

SAP Best Practices for Intelligent Automation for SAP Business One

# Supplier Invoice Upload for Intelligent Invoice Scanning

Technical Specification

THE BEST RUN



# TABLE OF CONTENTS

TECHNICAL OVERVIEW.....	3
Bot Type .....	3
PREREQUISITES.....	3
SOFTWARE REQUIREMENTS .....	4
BOT SETUP .....	4
Trigger Input Parameters .....	4
COMPONENTS .....	5
BOT WORKFLOW .....	6
OUTPUT AND LOGS.....	6
CONSTRAINTS.....	7
SECURITY.....	7

## TECHNICAL OVERVIEW

The Supplier Invoice Upload for Intelligent Invoice Scanning bot is an SAP Business One best practice project template for SAP Process Automation. The bot automates the process of uploading supplier invoices to the Document Information Extraction service, which scans and extracts the information from the documents. The extracted information is passed by the bot to SAP Business One using the Open Data Protocol to create a record in the SAP Business One database. From this point on, you can use the Electronic Document Import Wizard functionality in the **Purchasing - A/P** module of SAP Business One to import the documents and generate a draft invoice.

This bot can be used as a standalone bot or it can work with the Business Document Extraction from E-mail bot, which downloads relevant documents attached to e-mails and places them in an automatically created folder structure. In this scenario, the Supplier Invoice Upload for Intelligent Invoice Scanning bot works in the second part in the end-to-end automation process. If you are using the Supplier Invoice Upload for Intelligent Invoice Scanning bot as a standalone bot, you need to manually download the documents from e-mails and place them in a manually created folder structure.

### Bot Type

This bot can be set up in unattended mode using SAP Process Automation.

Attended	Unattended	Screen Scraping
No	Yes	No

## PREREQUISITES

- **Windows Credentials**

You have added a generic credential in Windows Credential Manager for user authentication to SAP Business One by the SAP Process Automation bot. For more information, see *Setting Up Windows Generic Credentials* in the online help for SAP Business One 10.0.

- **SAP Business One**

In **Administration** → **System Initialization** → **Document Settings**, on the **Electronic Documents** tab, you have activated the **Document Information Extraction** protocol.

- **Root Folder**

You have created a folder with an arbitrary name in the local system that will function as the root folder for the automation. The bot will use the root folder to:

- Create a log folder where log files will be stored
- Store the business documents in a categorized folder structure

For more information, see the [Output and Logs](#) section.

**Note:** If this bot is working with other bots in an end-to-end automation process, all bots must use the same local root folder.

- **Configuration File**

You have downloaded the configuration file that is available in the **Documents** section of the bot project in the [SAP Intelligent RPA Store](#) and placed it inside the root folder. You can also access the bot project and configuration file in the Application Development for SAP Process Automation on the **Store** tab.

Rule	Business Object	Company Code	Outlook Account	Recipient Name	Recipient search criteria	Unread Emails only	Subject	Subject search criteria
1	Invoice	MC10000		abc@sap.com ABC	Like	Yes	Invoice	Like

**Note:** Details related to each field can be displayed by hovering over the field name.

“Business Object” and “Company Code” are business values and required fields. The “Company Code” field is needed to process the business documents for a specific entity. In this field, enter an arbitrary value (consisting of numbers, letters, or both) to identify the company. If you are using branches for the SAP Business One company, you can enter the branch identification number.

The fields with green headers are e-mail filter parameters and are only required if you are using the Business Document Extraction from E-mail bot. In this case, use the same configuration file for both bots. The rows of the e-mail filter values are connected using the logical operator “or”, while the columns within a row are connected using the logical operator “and”. You do not need to specify all the filter values (if a filter value is blank, that filter will be ignored).

Each row in the configuration file corresponds to a filter rule. For each rule, the bot creates the folders for each company code and business object inside the root folder. When adding the scheduled trigger for the bot in the Application Development, you need to specify the name of the configuration file as the variable “configExcelFilename”. The configuration file must be closed while running the bot.

**Note:** If the bot is working with other bots in end-to-end automation process, use the same configuration file for all the bots (except for the bot-specific configuration files for Activity Creation for Business Partners), with the business object and company codes specified for each bot.

## SOFTWARE REQUIREMENTS

- Microsoft Excel
- Application Development for SAP Process Automation. For more information, see [Subscribing to SAP Process Automation](#) in the application help for SAP Process Automation on SAP Help Portal (EN only).
- Desktop Agent 2.0.20 or higher. For more information, see [Install Desktop Agent to Run Automations](#) in the application help for SAP Process Automation on SAP Help Portal (EN only).

## BOT SETUP

1. Acquire the Supplier Invoice Upload for Intelligent Invoice Scanning project from the [SAP Intelligent RPA Store](#). You can also acquire the project in the Application Development for SAP Process Automation on the **Store** tab.
2. Deploy the bot and add a scheduled trigger.
3. Register and add an agent.
4. Wait for the scheduled trigger or start a bot run immediately (in **Monitor** → **Automations**, click the **Actions** icon and choose **Run now**).

For more information on steps 1-3, see *Setting Up and Deploying Best Practices Template Bots in the Application Development* in the online help for SAP Business One 10.0.

## Trigger Input Parameters

The following table provides details on the trigger input parameters for SAP Process Automation that are required for running the bot.

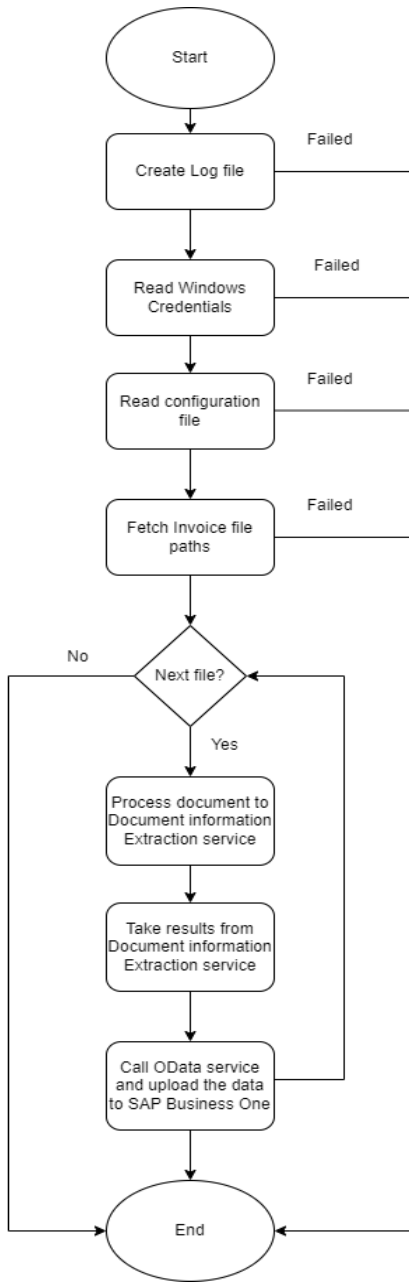
Trigger Variable Name	Type	Sample Value	Description
businessOneDBName	Text	MyDB	The name of the database to which the bot is to upload the supplier invoices.

Trigger Variable Name	Type	Sample Value	Description
rootFolderPath	Text	C:\Users\Desktop\SPA	The root folder location where the configuration file is stored.
configExcelFilename	Text	Config.xlsx	The name of the universal configuration file that contains the business object, company code, and (if using the Business Document Extraction from E-mail bot) the parameters for filtering e-mails.
B1CredentialEntryName	Text	B1_Credentials	The name you provided for the credentials you set in Windows Credential Manager in the <i>Internet or network address</i> field. Note that the credentials information needs to be set as the SAP Business One user name and password.
businessOneTenantURL	Text	https://<IP address>:<port>	The IP address of the server that hosts the SAP Business One tenant. This is the address of the SAP Business One Service Layer to be accessed by the bot. The '50000' appended to the URL is the standard Service Layer port for SAP Business One; this value may differ depending on your configuration.

## COMPONENTS

Library	Type	Comments
Excel	Read	Used to get input data from the end user.
Excel	Write	Used to write/create/modify files during the bot run.

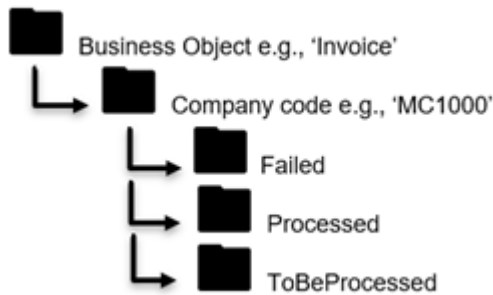
## BOT WORKFLOW



## OUTPUT AND LOGS

- **Root Folder Structure**

For each rule in the configuration file, the bot requires the following folder structure inside the root folder:



If you are using the Supplier Invoice Upload for Intelligent Invoice Scanning bot as a standalone bot, you need to manually create the required root folder structure. In the "Invoice" folder, each folder you create corresponding to a company code needs to contain three subfolders: "Failed", "Processed", and "ToBeProcessed". If you are using the Business Document Extraction from E-mail bot, the bot automatically creates the required folder structure (ensure that you are using the same configuration file for the bots).

Supplier invoices that you want the bot to process need to be placed in the local "ToBeProcessed" folder. If you are using the Business Document Extraction from E-mail bot, relevant files downloaded from e-mails are automatically placed by the bot in the "ToBeProcessed" local folder. Successfully processed invoices are moved to the "Processed" folder, while invoices that failed to be processed are moved to the "Failed" folder in the local or shared folder.

- **Logs**

The bot creates a folder named "Logs" inside the root folder to store the log files for each bot run. If a "Logs" folder already exists from another bot, this bot uses the same folder to store the log files.

**Note:** Log files should not be opened while running the bot.

## CONSTRAINTS

- This bot can only work on a Microsoft Windows operating system.

## SECURITY

Certain configuration scenarios require a technical user. In such cases, every natural person needs a separate technical user (for example, a separate communication arrangement). The user should not share their credentials with any other natural person.

For security-relevant information that applies to SAP Process Automation, see [Security](#) in the application help for SAP Process Automation on SAP Help Portal (EN only).

[www.sap.com/contactsap](http://www.sap.com/contactsap)

© 2022 SAP SE or an SAP affiliate company. All rights reserved.

No part of this publication may be reproduced or transmitted in any form or for any purpose without the express permission of SAP SE or an SAP affiliate company.

The information contained herein may be changed without prior notice. Some software products marketed by SAP SE and its distributors contain proprietary software components of other software vendors. National product specifications may vary.

These materials are provided by SAP SE or an SAP affiliate company for informational purposes only, without representation or warranty of any kind, and SAP or its affiliated companies shall not be liable for errors or omissions with respect to the materials. The only warranties for SAP or SAP affiliate company products and services are those that are set forth in the express warranty statements accompanying such products and services, if any. Nothing herein should be construed as constituting an additional warranty.

In particular, SAP SE or its affiliated companies have no obligation to pursue any course of business outlined in this document or any related presentation, or to develop or release any functionality mentioned therein. This document, or any related presentation, and SAP SE's or its affiliated companies' strategy and possible future developments, products, and/or platform directions and functionality are all subject to change and may be changed by SAP SE or its affiliated companies at any time for any reason without notice. The information in this document is not a commitment, promise, or legal obligation to deliver any material, code, or functionality. All forward-looking statements are subject to various risks and uncertainties that could cause actual results to differ materially from expectations. Readers are cautioned not to place undue reliance on these forward-looking statements, and they should not be relied upon in making purchasing decisions.

SAP and other SAP products and services mentioned herein as well as their respective logos are trademarks or registered trademarks of SAP SE (or an SAP affiliate company) in Germany and other countries. All other product and service names mentioned are the trademarks of their respective companies. See [www.sap.com/trademark](http://www.sap.com/trademark) for additional trademark information and notices.

**THE BEST RUN**

