



# **ServiceNow Adapter and Plug-In Installation Guide** For SAP Integration Suite and SAP Cloud Integration

Version 1.0.4 – April 2024

**THE BEST RUN**

# TABLE OF CONTENTS

<b>1 INTRODUCTION .....</b>	<b>3</b>
<b>1.1 Internet Hyperlinks .....</b>	<b>3</b>
<b>2 PACKAGE CONTENT .....</b>	<b>3</b>
<b>3 PREREQUISITES.....</b>	<b>3</b>
<b>4 ADAPTER INSTALLATION .....</b>	<b>3</b>
<b>4.1 Adapter Installation on Cloud Foundry .....</b>	<b>3</b>
<b>4.1.1 Prerequisites.....</b>	<b>3</b>
<b>4.1.2 Adapter Installation via the Design Tab .....</b>	<b>3</b>
<b>4.1.3 Importing the Adapter without Integration Flow Creation.....</b>	<b>6</b>
<b>5 PLUG-IN INSTALLATION STEPS.....</b>	<b>7</b>

## 1 INTRODUCTION

This is the official guide for the ServiceNow Adapter for SAP Cloud Integration. This guide covers all relevant information for the installation of the ServiceNow adapter and its plug-in where applicable. Please read this guide carefully before using the ServiceNow adapter.

### 1.1 Internet Hyperlinks

The documentation may contain hyperlinks to the Internet. These hyperlinks are intended to serve as hints where to find related information. We do not warrant the availability and the correctness of this related information or the ability of this information to serve a particular purpose.

## 2 PACKAGE CONTENT

This section provides the details of the files that are provided as part of the ServiceNow Adapter installation package. It is assumed that the bundle is downloaded from the SAP Marketplace.

The ServiceNow Adapter Plug-In installation package consists of the file below:

File Name	Description
ServiceNowAdapterPlugin.jar	<ul style="list-style-type: none"><li>The Eclipse Plug-In or Workbench file</li></ul>

## 3 PREREQUISITES

To use the document, the following aspects are assumed:

- The ServiceNow Adapter bundle which contains the SAP-recommended version of Eclipse is downloaded from the SAP Marketplace.
- The SAP-recommended version of Eclipse is installed. Currently, Eclipse Oxygen is preferred. (Refer to Section **Error! Reference source not found.** of this guide.)

To get the latest SAP recommendation, visit the link: <https://tools.hana.ondemand.com/#cloudintegration>.

## 4 ADAPTER INSTALLATION

### 4.1 Adapter Installation on Cloud Foundry

Before the ServiceNow Adapter can be used in the Cloud Foundry environment, it needs to be deployed to the SAP Cloud Integration tenant.

#### 4.1.1 Prerequisites

Before installing the Adapter using this approach, ensure that the following prerequisites are in place:

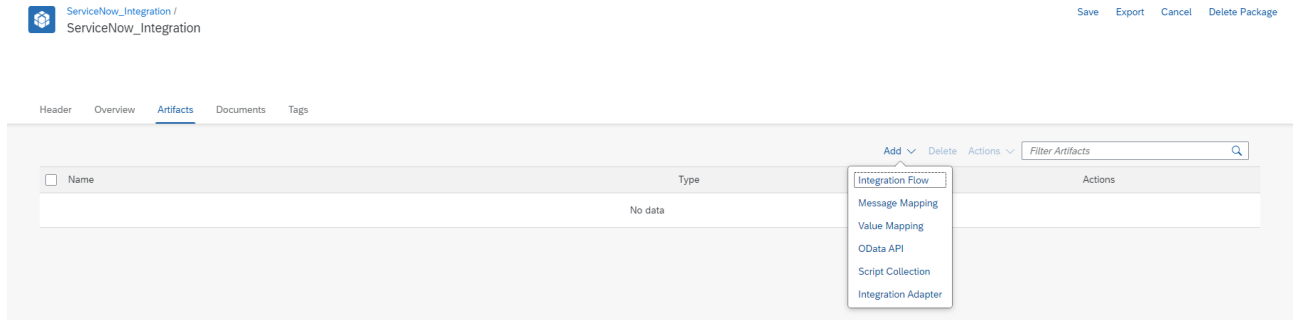
- There should not be any .esa file of the ServiceNow Adapter in the SAP Integration Suite Design workspace. In case this package exists, remove the .esa file from the Design workspace.
- The package "ServiceNow Adapter for SAP Integration Suite" should not be in the Design workspace of the SAP Integration Suite tenant. In case this package exists, delete it.

#### 4.1.2 Adapter Installation via the Design Tab

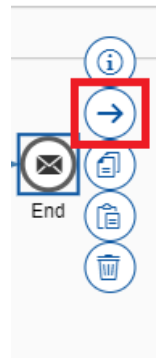
It is important to note that there is no manual way of installing the ServiceNow Adapter. The following procedure explains how the ServiceNow Adapter is migrated from the Discover workspace to the Design workspace of the SAP Integration tenant.

Proceed as follows:

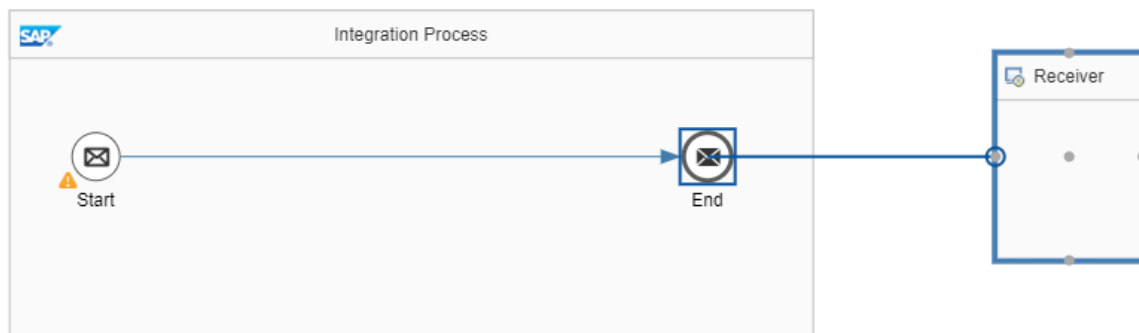
1. Navigate to the Design tab to access the workspace.
2. Select the integration package where the integration flow is to be created.
3. Choose Edit to enable editing of the package.
4. Navigate to the Artifacts tab. Choose Add and elect Integration Flow.



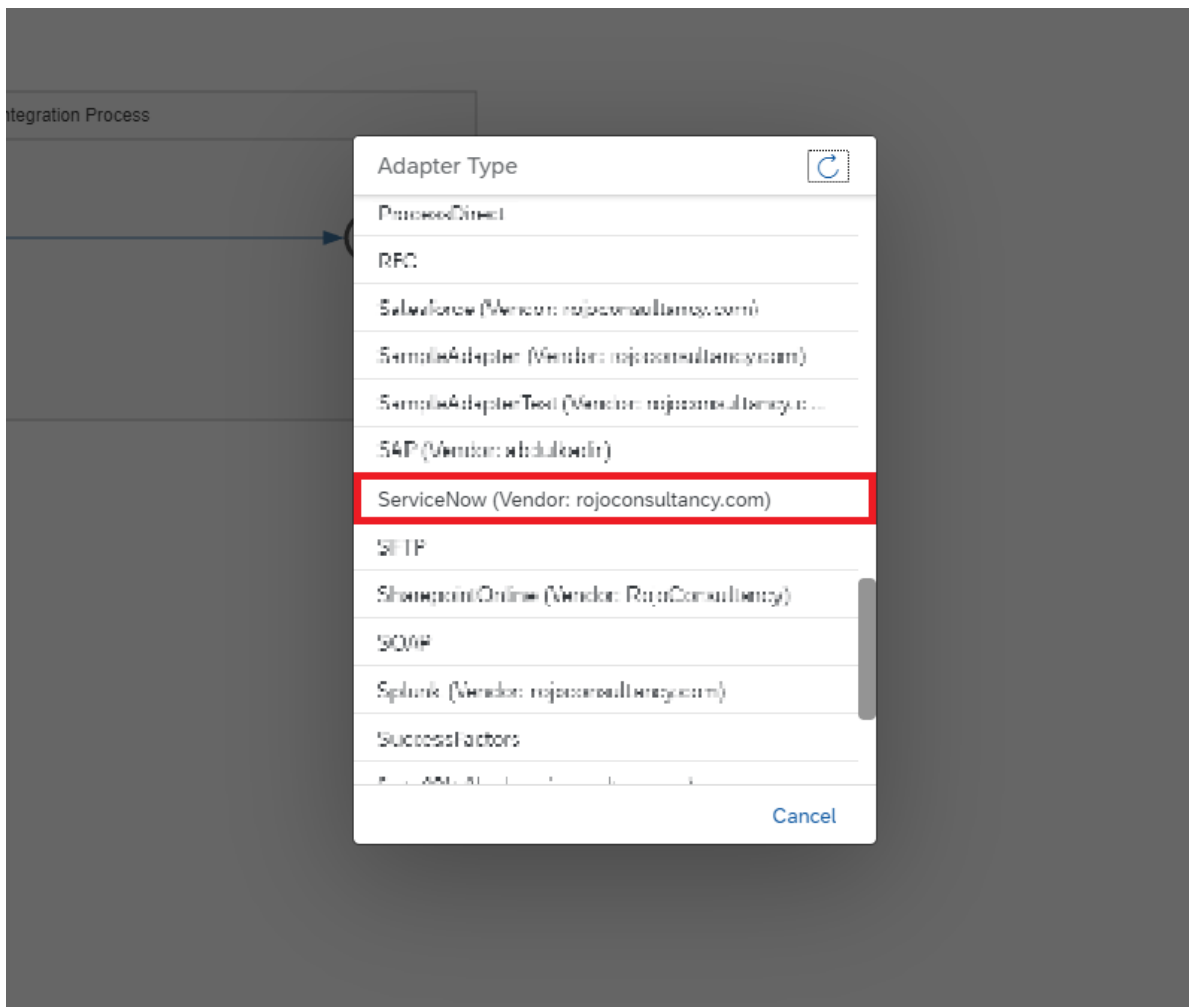
5. Create an integration flow and supply a name.
6. Proceed to the newly created integration flow and click on Edit.



7. Select End. Choose the arrow-right icon (→).
8. Drag the pointer to the Receiver box.

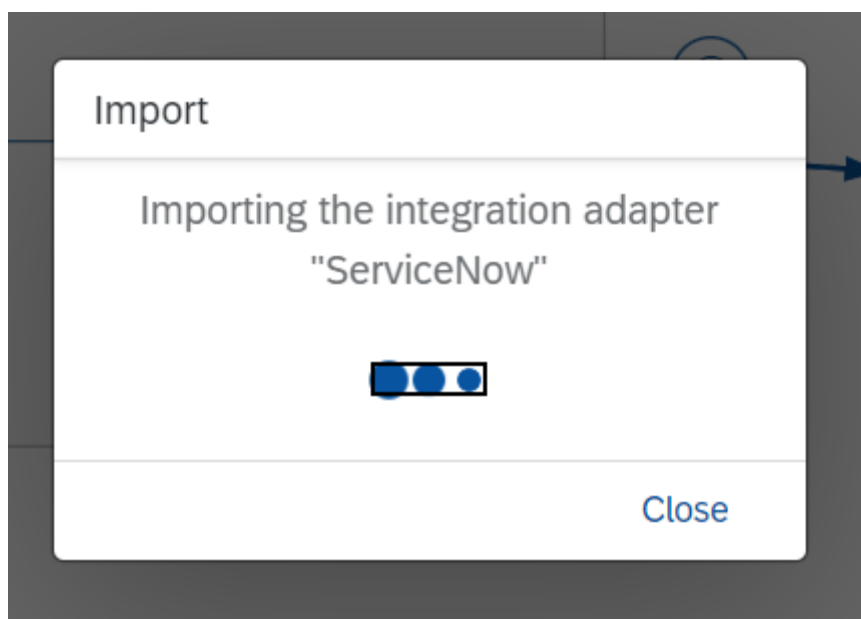


9. Select the ServiceNow Adapter.



Note that the ServiceNow Adapter is already available in the list of adapters.

10. After selecting ServiceNow Adapter, the Adapter is imported into the Design workspace of the SAP Integration Suite tenant.



11. Once the package is imported, the adapter deployment is triggered.

'ServiceNow' is triggered for deployment.

12. Once the ServiceNow Adapter is deployed, a success message is displayed.

'ServiceNow' successfully deployed.

#### 4.1.3 Importing the Adapter without Integration Flow Creation

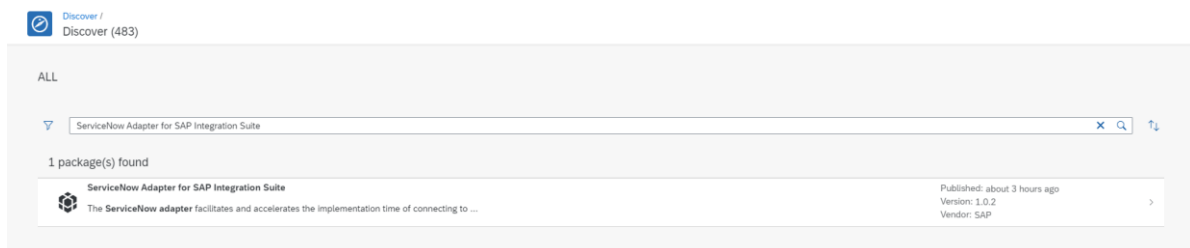
Alternatively, the ServiceNow Adapter can also be imported into the Design workspace without creating an integration flow. This method is useful for scenarios where integration flow packages are migrated from development to a higher environment (Example: Production).

Use Transport Management Service (TMS) to import/transport the ServiceNow Adapter to a higher environment.

If the TMS option is not available in the landscape, the Adapter Package can be imported from the Discover workspace to the Design workspace via the copy option of the former.

Proceed as follows to copy the integration package and import the ServiceNow Adapter:

1. Navigate to the Discover tab.
2. Using the search box, search for “ServiceNow Adapter for SAP Integration Suite”.



3. Select the “ServiceNow Adapter for SAP Integration Suite” package.
4. Navigate to the Copy option. Doing so copies the said package from the Discover workspace to the Design workspace.



5. Navigate to the Design workspace and select the “ServiceNow Adapter for SAP Integration Suite” package.
6. Select Artifacts and choose the Deploy action to deploy the ServiceNow Adapter.

## 5 PLUG-IN INSTALLATION STEPS

Please follow the steps below to install ServiceNow Adapter in Eclipse Oxygen:

1. Download Eclipse Oxygen 3a from the URL:  
<https://www.eclipse.org/downloads/packages/release/oxygen/3a>
2. Once installed, copy the ServiceNow Plug-in JAR file.
3. Go to the installation folder (e.g.: C:\Program Files (x86)\oxygen\eclipse).
4. Open the Plug-in folder and paste the ServiceNow Plug-in JAR file. The exact name of the file can be found in Section **Error! Reference source not found.**
5. Open Eclipse Oxygen.
6. Go to Windows > Perspective > Open Perspective > Other (See Figure 5.1).

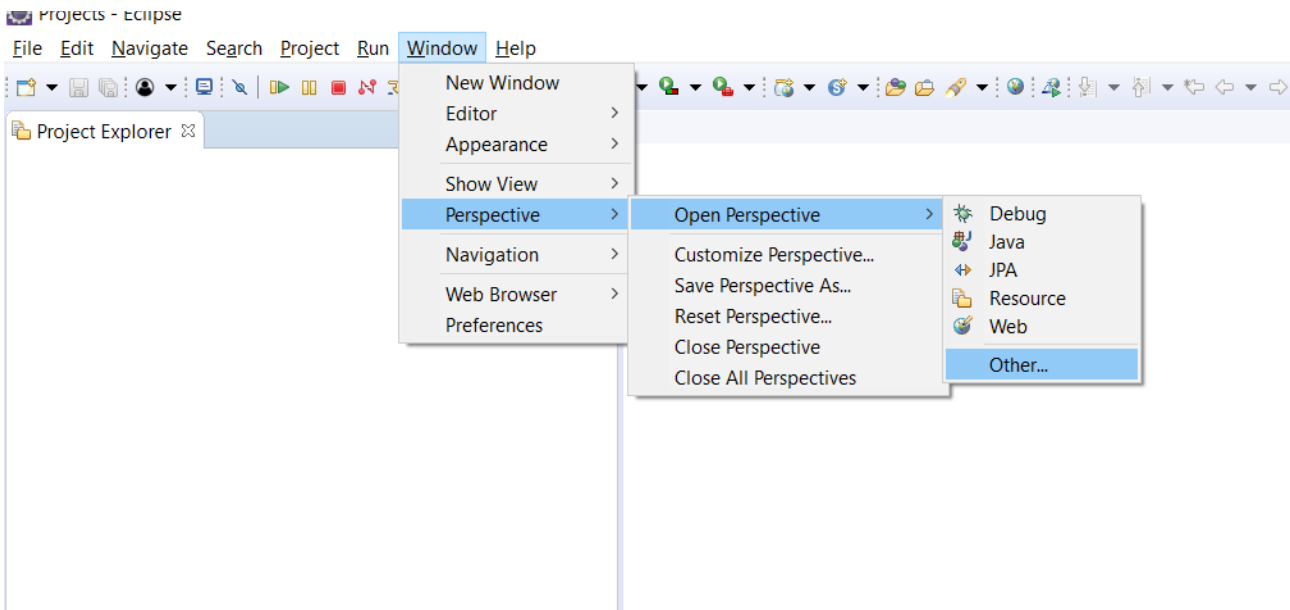


Figure 5.1 Changing perspective

7. Select ServiceNow Adapter and click on Open (See Figure 5.2).

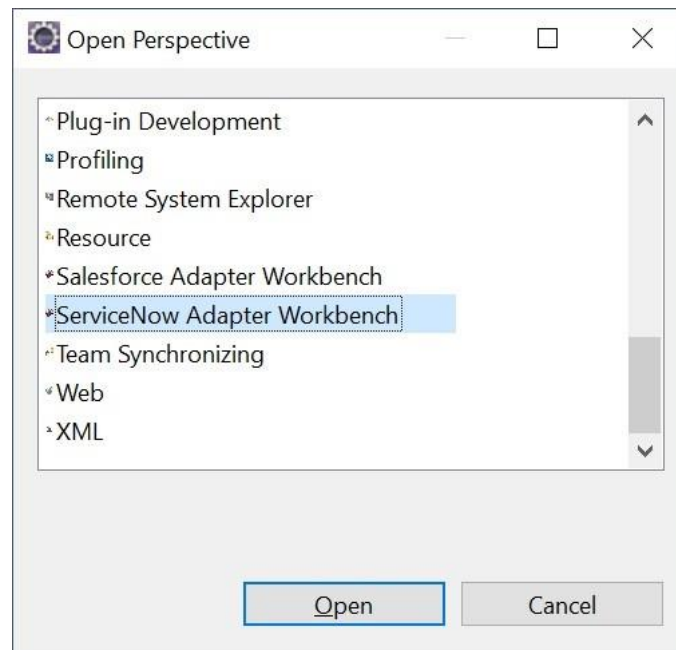


Figure 5.2 Selecting the Adapter Perspective

8. Go to Window > Preferences.

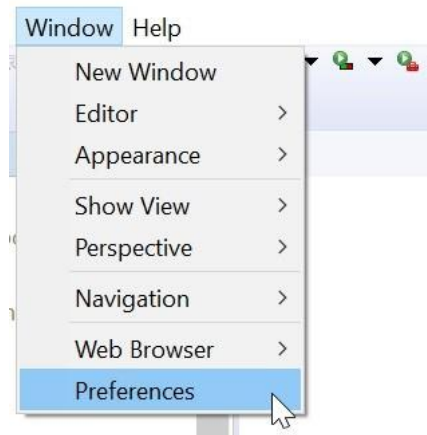


Figure 5.3 Selecting the Preference Option

9. Select ServiceNow Plug-in and fill in the ServiceNow details. These details can be obtained in the ServiceNow tenant.

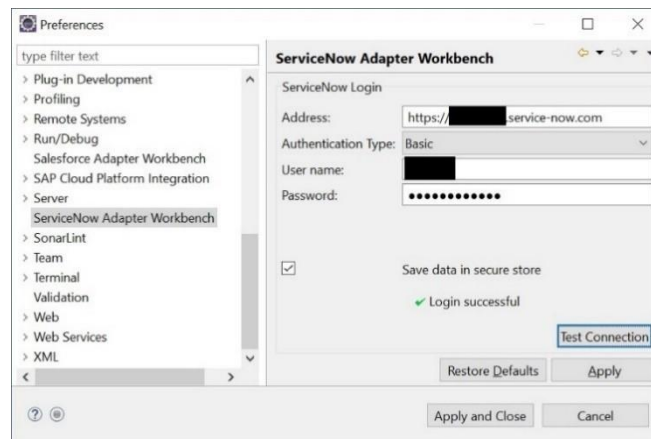


Figure 5.4 ServiceNow Perspective

In the preference page, the **Address** field refers to the target tenant URL. A tenant URL, for instance, could be configured similarly to: <https://abc12345.service-now.com>.

Note that there are two different authentication mechanisms, namely Basic and OAuth2 Client Credential. In case Basic Authentication is selected, a **User name** and its **Password** should be provided. See Figure 5.4.

In case that OAuth2 Client Credential authentication is chosen, fill in **Client ID** and **Client Secret** on top of the Username and password. See an example in Figure 5.5.



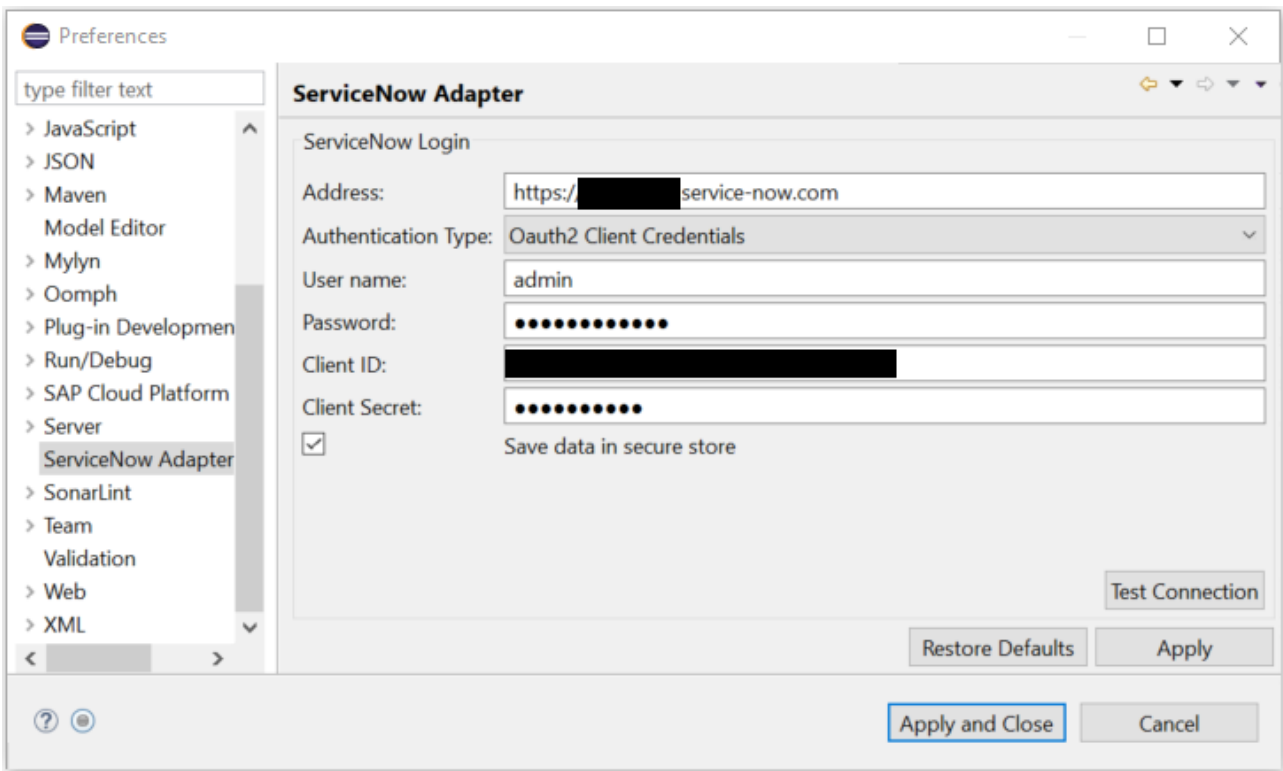


Figure 5.5 Configure the connection details of the Eclipse plug-in with OAuth.

For more details on how to obtain these credential details, please refer to Section 12 of the **Service Adapter Guide** document.

Note that these three fields correspond to the same information required in the Adapter's Connection tab. As shown in Figure 5.5, there is a **Save data in secure store** checkbox that persists the authentication details on the secure store on the local machine.

The **Test Connection** button is provided to validate whether the ServiceNow tenant can be accessed using the provided login data.

If the configuration details are correct, a **login successful** message is shown as seen in Figure 5.6. Ensure that the connection is successful before proceeding to use the Adapter and the plug-ins.

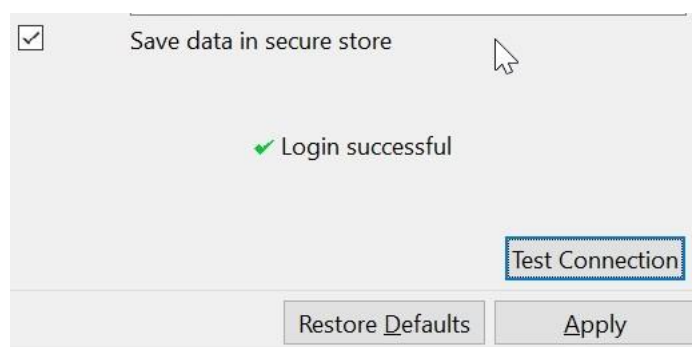


Figure 5.6 Successful Connection of Plug-in

After a successful connection test, click on **Apply and Close**. To start using the Adapter and the plug-in, refer to the ServiceNow Adapter Guide.

[www.sap.com/contactsap](http://www.sap.com/contactsap)

© 2022 SAP SE or an SAP affiliate company. All rights reserved.

No part of this publication may be reproduced or transmitted in any form or for any purpose without the express permission of SAP SE or an SAP affiliate company.

The information contained herein may be changed without prior notice. Some software products marketed by SAP SE and its distributors contain proprietary software components of other software vendors. National product specifications may vary.

These materials are provided by SAP SE or an SAP affiliate company for informational purposes only, without representation or warranty of any kind, and SAP or its affiliated companies shall not be liable for errors or omissions with respect to the materials. The only warranties for SAP or SAP affiliate company products and services are those that are set forth in the express warranty statements accompanying such products and services, if any. Nothing herein should be construed as constituting an additional warranty.

In particular, SAP SE or its affiliated companies have no obligation to pursue any course of business outlined in this document or any related presentation, or to develop or release any functionality mentioned therein. This document, or any related presentation, and SAP SE's or its affiliated companies' strategy and possible future developments, products, and/or platform directions and functionality are all subject to change and may be changed by SAP SE or its affiliated companies at any time for any reason without notice. The information in this document is not a commitment, promise, or legal obligation to deliver any material, code, or functionality. All forward-looking statements are subject to various risks and uncertainties that could cause actual results to differ materially from expectations. Readers are cautioned not to place undue reliance on these forward-looking statements, and they should not be relied upon in making purchasing decisions.

SAP and other SAP products and services mentioned herein as well as their respective logos are trademarks or registered trademarks of SAP SE (or an SAP affiliate company) in Germany and other countries. All other product and service names mentioned are the trademarks of their respective companies. See [www.sap.com/trademark](http://www.sap.com/trademark) for additional trademark information and notices.

**THE BEST RUN**