

SAP BUSINESS TECHNOLOGY PLATFORM | EXTERNAL

Integration Guide

SAP Build Process Automation Integration with SAP S/4HANA for Handle Tenant Move In Date Changes

Table of Contents

Table of Contents	2
Overview	3
Required SAP Business Technology Platform Services	5
Setup and Configuration.....	6
Configure RFC Destination.....	6
[Optional] Configure Cloud Connector.....	6
Configure BOR Events in SAP S/4HANA.....	7
Import SAP BTP certificates into SAP S/4HANA	7
Import, configure and deploy cloud integration content.....	7
Import pre-packaged Integration content in SAP Integration Suite	8
HTTP Adapter Configuration	9
RFC Adapter Configuration.....	9

Overview

This document provides information about setting up the SAP Business Technology Platform account to consume the live process content package “**Handle Tenant Move-In Date Changes**”. The main audience of this document are technical IT/system administrators.

When a tenant contacts a utility company to change future Move-In, the user agent initially performs validation if the tenant has a contract and whether it has a valid owner existing for a particular contract. Once the Move-In date is changed for a tenant a workflow will be triggered to perform Move-Out of Owner. Initially in the workflow there is a check to see if there is tenant-Owner relationship existing based on the Move-Out Document Number. If there is no tenant-owner relationship, the service order of the tenant is updated with Move-In date.

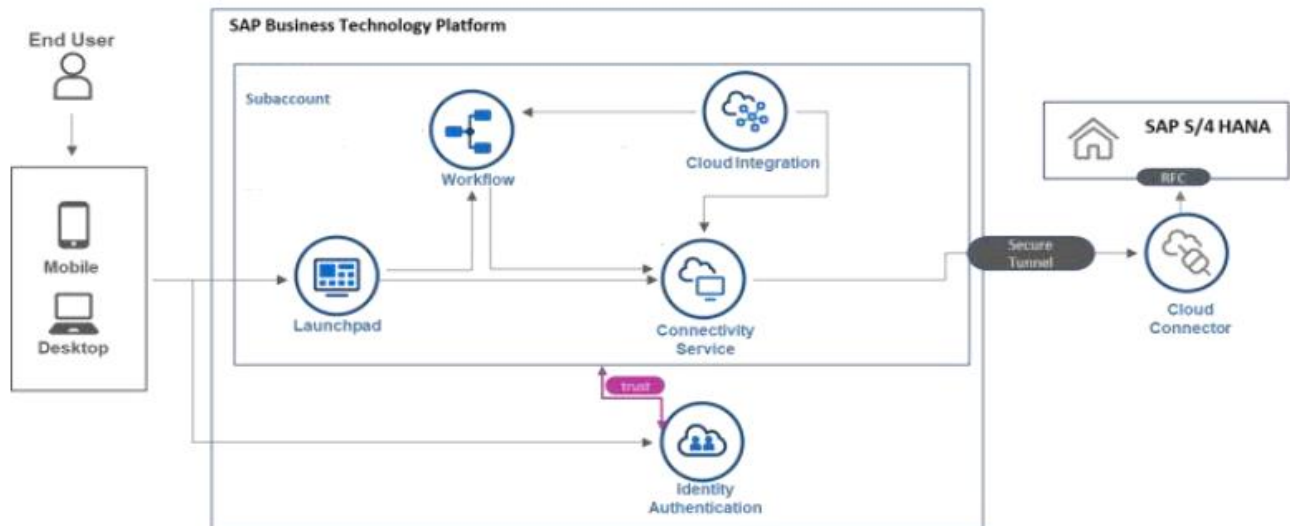
If in case tenant-owner relationship exists, Move-Out date of the owner is changed and then the corresponding service order of the tenant is also updated with the Move-In date.

Move-Out date of owner happens one day prior to the Tenant Move-In date

Salient features of the content package are:

- Plug and Play with SAP S/4HANA without any additional development.
- Provision for exception handling with the help of out-of-the-box workflow features.
- Auto Update service order.
- Cancellation of previously running workflow instances for the same Move-In Document number.

Solution Architecture



Required SAP Business Technology Platform Services

The live process content packages **Handle Tenant Move-In Date Changes** is intended to be used for SAP S/4HANA 1809 On-Premise and requires the following services in SAP BTP:

- SAP Build Process Automation or SAP Workflow Management to orchestrate the process
- SAP Integration Suite to start the workflow instance and to update the Owner Move-Out date and service order date.
- SAP Connectivity service (cloud connector) to establish access to SAP S/4HANA on-premise.
- SAP Cloud Portal service or SAP Launchpad service to access the apps that are involved in the process
- SAP Cloud Identity Services - Identity Authentication (optional).
- SAP Business Application Studio to modify/deploy the SAPUI5 applications.
- SAP BTP, Cloud Foundry runtime.

Setup and Configuration

This section will explain how to setup the integration content that is required for the live process content package **Handle Tenant Move-In Date Changes**.

Configure RFC Destination

Configure a RFC destination to connect with SAP S/4HANA on-premise. Below is a destination configuration for SAP S/4HANA on-premise.

Note: This destination is required for SAP Cloud Integration. If the below mentioned Destination name is changed, then the integration flow needs to be configured accordingly.

Name	S4HANA
Type	RFC
Proxy Type	OnPremise
User	<ONPREMISE_USER>
Password	<ONPREMISE_PASSWORD>
Repository User	<ONPREMISE_USER>
Repository Password	<ONPREMISE_PASSWORD>

Additional Properties	jco.client.ashost: <host>
Additional Properties	jco.client.client:<client number>
Additional Properties	jco.client.lang
Additional Properties	jco.client.sysnr:

[Optional] Configure Cloud Connector

For SAP S/4HANA on-premise landscape, configure cloud connector to enable secure tunnel to SAP BTP tenant. Please refer the help documentation to [configure Cloud Connector](#).

Services/Resources that need to be exposed from SAP S/4HANA on-premise using Cloud Connector are as mentioned below:

Resources	Protocal	Use
TH_GET_VIRT_HOST_DATA	RFC	To fetch the Host and Port of the backend system

ZW_FETCH_SERVICE_ORDER_NUMBER	RFC	To fetch the Service Order details
ZWRAPPER_SERVICE_ORDER_UPDATE	RFC	Service Order change Date
ZW_MOVE_OUT_DATE_CHANGE	RFC	Wrapper to update the Move- Out Date

Configure BOR Events in SAP S/4HANA

- From the Transaction code SWE2 create a Workflow Event for-MOVEINDATECHANGED and activate it.
- Redefine the standard Function Module SWW_WI_CREATE_VIA_EVENT to a wrapper Function module ZSWW_WI_CREATE_VIA_EVENT.
- Double click on the previously created BOR event and maintain the wrapper Function module ZSWW_WI_CREATE_VIA_EVENT in the Receiver Function Module field.

Import SAP BTP certificates into SAP S/4HANA

From the SAP BTP tenant specific to your Cloud Integration service, [export certificates](#) from BTP tenant and [import the certificates in to SAP S/4HANA](#) system using the t-code STRUST.

Import, configure and deploy cloud integration content

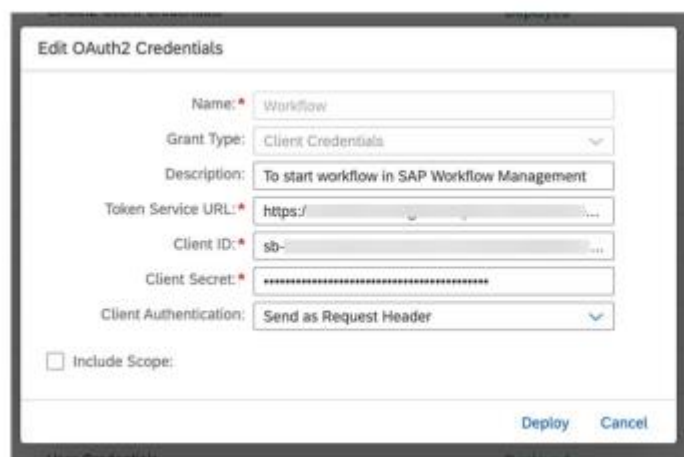
This live process content **Handle Tenant Move-In Date Changes** requires the cloud integration package **SAP Build Process Automation Integration with SAP S/4HANA for Handle Tenant Move In Date Changes** to process the **Move-Out Date of Owner and change Service order date of tenant** in SAP S/4HANA. The integration content package **SAP Build Process Automation Integration with SAP S/4HANA for Handle Tenant Move In Date Changes** is available in SAP API Business hub. Integration models use Function Modules/BAPI'S to integrate with SAP S/4HANA. The following integration models are available in this package.

1. Trigger Workflow Owner Move-Out
2. Update Owner Move-Out Date
3. Get Host and Port of SAP S/4HANA system.
4. Get Service Order
5. Update Date in Service Order

Import the integration package to your SAP Cloud Integration tenant. To be able to import and deploy integration flows, you need the role AuthGroup.IntegrationDeveloper (in Neo environment) or PI_Integration_Developer (in cloud foundry environment) assigned in your tenant.

Import pre-packaged Integration content in SAP Integration Suite

- Access your SAP Integration Suite tenant management node (<https://<integrationtenant>/itspaces>).
- View all pre-packaged integration flow under Discover->Integration. (<https://<integrationtenant>/itspaces/shell/discover>)
- Search content package “SAP Build Process Automation Integration with SAP S/4HANA for Handle Tenant Move In Date Changes”.
- Click on the package SAP Build Process Automation Integration with SAP S/4HANA for Handle Tenant Move In Date Changes.
- Click Copy to import the Integration content package to your workspace.
- Navigate to the Monitor view (<https://<integrationtenant>/itspaces/shell/monitoring>) to setup the security materials required for the package.
- Deploy the following credentials using the Security Material APP
 - **Workflow** – (OAuth2 Client Credentials) To start the workflow in SAP Build Process Automation or SAP Workflow Management. Make sure that the workflow service instance was created with the following scopes - WORKFLOW_INSTANCE_GET, WORKFLOW_INSTANCE_START, WORKFLOW_INSTANCE_CANCEL.



Note: The credential names can be different from what is mentioned above. Make sure that you configure the appropriate credential names in the integration flow's HTTP adapter configuration.

HTTP Adapter Configuration

- Open the integration model **Trigger Workflow Owner Move-Out**
- Click **Configure** button, choose the appropriate receivers (workflow, or SAP S/4HANA) and set their respective API endpoint ,credential name, timeout.
- Click on Save and deploy.

RFC Adapter Configuration

- Open the integration model "**Update Owner Move-Out Date**".
- Click **Configure** button, choose the appropriate receivers, and set the respective RFC destination name that was previously created.
- Click on Save and deploy.
- Follow the same approach for the other integration models.