



1. [CC_Demo_iflows] Demo flows for checking different testing scenarios

Date: 02/07/2021

Version: 1.0

Author: Valentin Ivanov

DOCUMENT CONTROL

Owner	Client contact	Status	Date issued
Valentin Ivanov	N/A	N/A	N/A

Version history log

Version	Description of change	Date	Author
1.0	Initial version	02.07.2021	Valentin Ivanov



TABLE OF CONTENTS

1 PURPOSE	3
2 OVERVIEW	3
3 PRE-REQUISITES.....	4
4 INTEGRATION FLOW CONFIGURATION.....	5
4.1 Configuration Parameters.....	5
5 STEPS FOR TESTING THE IFLOW	6



1 PURPOSE

This set of demo iflows are delivered to facilitate running different testing scenario, depending on the payload type (xml, json, text) or sender protocol (http, soap, process direct).

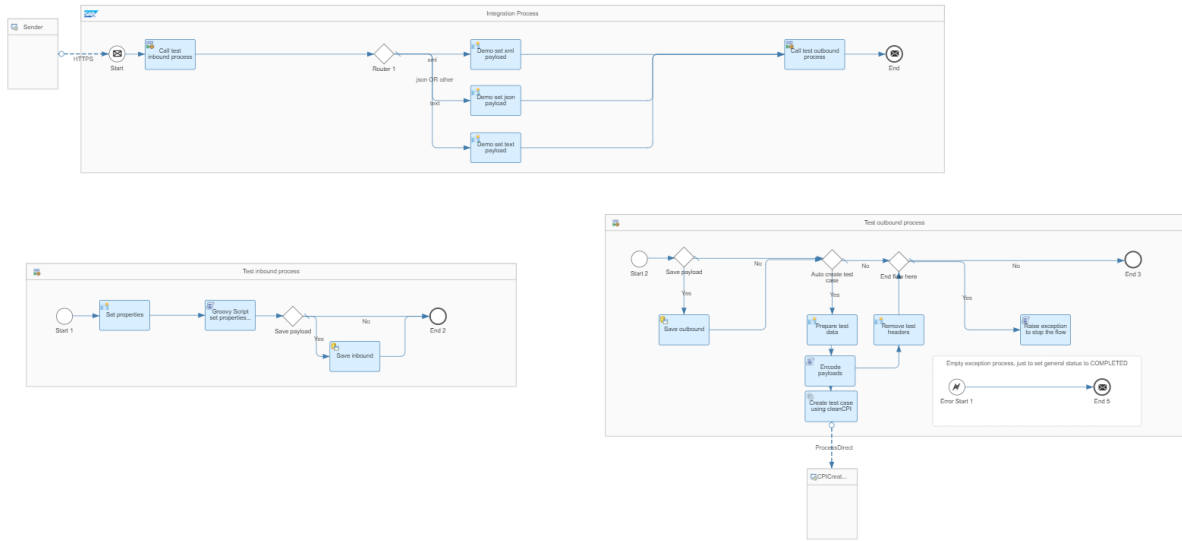
2 OVERVIEW

Eight iflows are included in the demo set:

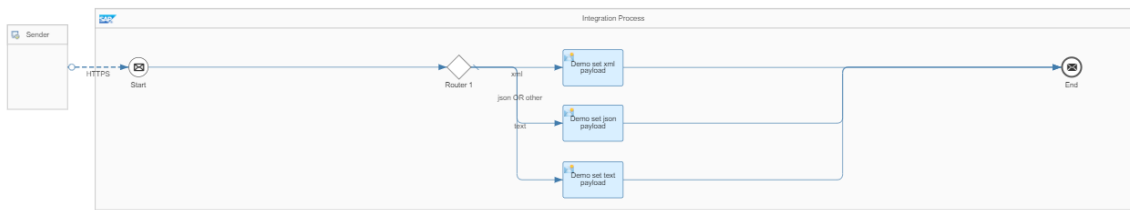
1. **CC_DemoHttpPersistMode** - HTTP demo flow for running tests in PERSIST mode and w/o auto create of testing cases
2. **CC_DemoHttpTraceMode** - HTTP demo flow for running tests in TRACE mode
3. **CC_DemoProcessDirectMainPersist** - PROCESS DIRECT main flow - to be used to trigger the PD PERSIST flows
4. **CC_DemoProcessDirectMainTrace** - PROCESS DIRECT main flow - to be used to trigger the PD TRACE flows
5. **CC_DemoProcessDirectPersistMode** - PROCESS DIRECT demo flow for running tests in PERSIST mode and w/o auto create of testing cases
6. **CC_DemoProcessDirectTraceMode** - PROCESS DIRECT demo flow for running tests in TRACE mode
7. **CC_DemoSoapPersistMode** - SOAP demo flow for running tests in PERSIST mode and w/o auto create of testing cases
8. **CC_DemoSoapTraceMode** - SOAP demo flow for running tests in PERSIST mode

Each demo iflow has an inbound header value (header.CC-ReturnTypes) that controls the outbound payload type.

Demo flow for persist mode:



Demo flow for trace mode:



3 PRE-REQUISITES

4 INTEGRATION FLOW CONFIGURATION

4.1 Configuration Parameters

Externalized Parameter Name	Description	Sample Value

5 STEPS FOR TESTING THE IFLOW

We deliver together with the integration package, a Postman collection that includes demo requests for each testing scenarios / demo iflows, but these iflows can be tested as regular integration scenarios, from any other tool.