



EXTERNAL

SAP Best Practices for Intelligent Automation for SAP Business One

# **Master Data Enrichment for Business Partner Identification**

Technical Specification

THE BEST RUN



# TABLE OF CONTENTS

TECHNICAL OVERVIEW.....	3
Bot Type .....	3
PREREQUISITES.....	3
SOFTWARE REQUIREMENTS .....	3
BOT SETUP .....	3
Trigger Input Parameters .....	4
COMPONENTS .....	4
API SERVICE ENDPOINTS.....	5
BOT WORKFLOW .....	6
OUTPUT AND LOGS .....	7
CONSTRAINTS.....	7
COMMON ERRORS.....	7
SECURITY.....	7

## TECHNICAL OVERVIEW

The Master Data Enrichment for Business Partner Identification bot is an SAP Business One best practice project template for SAP Process Automation. The bot automates the manual steps required in updating the Document Information Extraction service API whenever business partner master data is modified. The bot retrieves the business partner list from SAP Business One, deletes the existing master data in the Document Information Extraction API, creates the business entity, and activates the business partner master data for use by the Document Information Extraction service.

This bot is designed to work with the Sales Order Creation from Local Purchase Order bot in an end-to-end automation process. When using the Sales Order Creation from Local Purchase Order bot, the Master Data Enrichment for Business Partner Identification bot can further improve the accuracy of the sales order creation by helping to identify the business partner code based on the business partner name, address, bank account, and other details scanned by the service from the purchase order document.

### Bot Type

This bot can be set up in unattended mode using SAP Process Automation.

Attended	Unattended	Screen Scraping
No	Yes	No

## PREREQUISITES

- **Windows Credentials**

You have added a generic credential in Windows Credential Manager for user authentication to SAP Business One by the SAP Process Automation bot. For more information, see *Setting Up Windows Generic Credentials* in the online help for SAP Business One 10.0.

- **Root Folder**

You have created a folder with an arbitrary name in the local system that will function as the root folder for the automation. The bot will use the root folder to:

- Create a log folder where log files will be stored

**Note:** If this bot is working with other bots in an end-to-end automation process, all bots must use the same local root folder.

## SOFTWARE REQUIREMENTS

- Microsoft Excel
- Application Development for SAP Process Automation. For more information, see [Subscribing to SAP Process Automation](#) in the application help for SAP Process Automation on SAP Help Portal (EN only).
- Desktop Agent 2.0.20 or higher. For more information, see [Install Desktop Agent to Run Automations](#) in the application help for SAP Process Automation on SAP Help Portal (EN only).

## BOT SETUP

1. Acquire the Master Data Enrichment for Business Partner Identification project from the [SAP Intelligent RPA Store](#). You can also acquire the project in the Application Development for SAP Process Automation on the **Store** tab.
2. Deploy the bot and add a scheduled trigger.

3. Register and add an agent.
4. Wait for the scheduled trigger or start a bot run immediately (in **Monitor** → **Automations**, click the **Actions** icon and choose **Run now**).

For more information on steps 1-3, see *Setting Up and Deploying Best Practices Template Bots in the Application Development* in the online help for SAP Business One 10.0.

### Trigger Input Parameters

The following table provides details on the trigger input parameters for SAP Process Automation that are required for running the bot.

Trigger Variable Name	Type	Sample Value	Description
B1_Application_URL	Text	https://<IP address>:<port>	The IP address of the server that hosts the SAP Business One tenant. This is the address of the SAP Business One Service Layer to be accessed by the bot. The '50000' appended to the URL is the standard Service Layer port for SAP Business One; this value may differ depending on your configuration.
B1CredentialEntryName	Text	B1_Credentials	The name you provided for the credentials you set in Windows Credential Manager in the <i>Internet or network address</i> field. Note that the credentials information needs to be set as the SAP Business One user name and password.
Log_File_Path	Text	C:\Users\Desktop\RPA	The location where the log files are to be stored.
B1_CompanyDB	Text	MyDB	The name of the company database in SAP Business One that the bot will access to retrieve the business partner list and extract data from.

### COMPONENTS

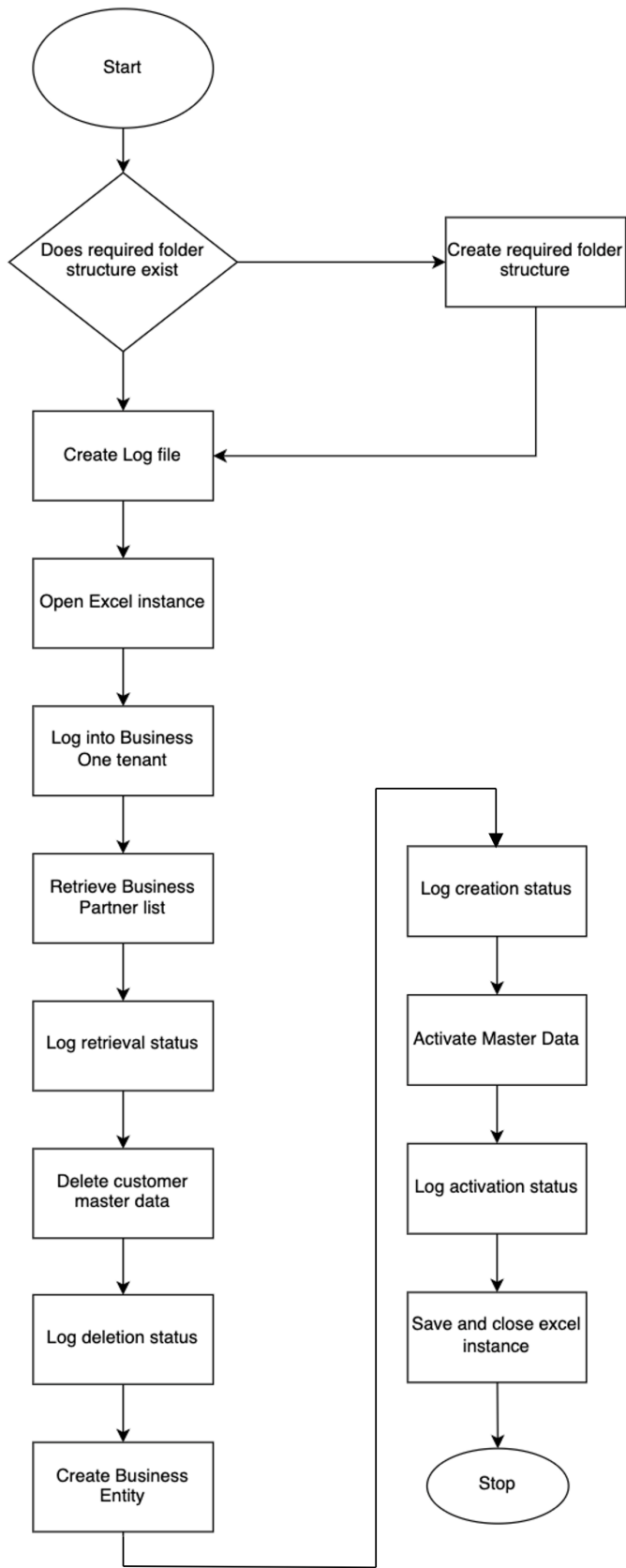
Library	Type	Comments
Excel	Write	Used to write/create/modify files during the bot run.

## API SERVICE ENDPOINTS

The following API Service endpoints are used by this bot to communicate with the Document Information Extraction Service.

Service Name	REQUEST	RESPONSE	Link
Delete all master data	Method: DELETE	Status - 201	<a href="#">Link</a>
Get enrichment data creation or deletion status	Method: GET	Status - 200	<a href="#">Link</a>
Create business entity enrichment data	Method: POST	Status - 201	<a href="#">Link</a>
Activate master data	Method: POST	Status - 201	<a href="#">Link</a>
Get data activation details	Method: GET	Status - 200	<a href="#">Link</a>

# BOT WORKFLOW



## OUTPUT AND LOGS

- **Logs**

The bot creates a folder named “Logs” inside the root folder to store the log files for each bot run. If a “Logs” folder already exists from another bot, this bot uses the same folder to store the log files.

**Note:** Log files should not be opened while running the bot.

## CONSTRAINTS

- This bot can only work on a Microsoft Windows operating system.

## COMMON ERRORS

- **Failure at Data Activation Step**

This error occurs if the SAP Document Information Extraction service encounters an error or is called during its cooldown period. Manual data activation can only be done every 4 hours. An automatic data activation is enabled by default, and this process can take up to 4 hours.

## SECURITY

Certain configuration scenarios require a technical user. In such cases, every natural person needs a separate technical user (for example, a separate communication arrangement). The user should not share their credentials with any other natural person.

For security-relevant information that applies to SAP Process Automation, see [Security](#) in the application help for SAP Process Automation on SAP Help Portal (EN only).

[www.sap.com/contactsap](http://www.sap.com/contactsap)

© 2022 SAP SE or an SAP affiliate company. All rights reserved.

No part of this publication may be reproduced or transmitted in any form or for any purpose without the express permission of SAP SE or an SAP affiliate company.

The information contained herein may be changed without prior notice. Some software products marketed by SAP SE and its distributors contain proprietary software components of other software vendors. National product specifications may vary.

These materials are provided by SAP SE or an SAP affiliate company for informational purposes only, without representation or warranty of any kind, and SAP or its affiliated companies shall not be liable for errors or omissions with respect to the materials. The only warranties for SAP or SAP affiliate company products and services are those that are set forth in the express warranty statements accompanying such products and services, if any. Nothing herein should be construed as constituting an additional warranty.

In particular, SAP SE or its affiliated companies have no obligation to pursue any course of business outlined in this document or any related presentation, or to develop or release any functionality mentioned therein. This document, or any related presentation, and SAP SE's or its affiliated companies' strategy and possible future developments, products, and/or platform directions and functionality are all subject to change and may be changed by SAP SE or its affiliated companies at any time for any reason without notice. The information in this document is not a commitment, promise, or legal obligation to deliver any material, code, or functionality. All forward-looking statements are subject to various risks and uncertainties that could cause actual results to differ materially from expectations. Readers are cautioned not to place undue reliance on these forward-looking statements, and they should not be relied upon in making purchasing decisions.

SAP and other SAP products and services mentioned herein as well as their respective logos are trademarks or registered trademarks of SAP SE (or an SAP affiliate company) in Germany and other countries. All other product and service names mentioned are the trademarks of their respective companies. See [www.sap.com/trademark](http://www.sap.com/trademark) for additional trademark information and notices.

**THE BEST RUN**

